



COAST GUARD ADVISORY NOTICE (CGAN 2016-011)

To: Distribution

Date: June 15, 2016

From: Waterways Management Division

Revision No: 00

Re: Macy's July 4th Fireworks Display

The Captain of the Port New York has established a Special Local Regulation temporarily restricting vessel movement on the waters of the East River, Upper New York Bay, and Buttermilk Channel along Manhattan and Brooklyn, NY for the Macy's 4th of July fireworks show (**See chartlets below**). This Special Local Regulation will be strictly enforced on Monday, July 4th 2016 from **6:00 pm until approximately 11:00 pm**. All persons and vessels shall comply with the instructions of the Coast Guard Captain of the Port or a designated representative.

All **spectator vessels** must enter their designated viewing areas by **7:30 pm** and must be holding position no later than **8:30 pm**. (The fireworks are scheduled to begin at approximately **9:20 pm**.) Vessels shall be required to hold position (**NOT** at anchor) and not depart the section until released by the on-scene Coast Guard Patrol Commander. This information will be broadcast via VHF-FM CHANNEL 13 and 16.

All spectator vessels shall maintain a 100 yard distance from any Coast Guard vessel at anchor, at all times.

The regulated area will be divided into the following seven sections:

- 1. ALPHA Section (Northernmost viewing area):** This section is designated as a spectator area limited to vessels greater than or equal to 20 meters in length (65.6 feet). All navigable waters of the East River south of a line drawn from position 40°45'20"N, 073°57'21"W (57th Street, New York, to 43rd Ave, Long Island City, New York) to a line drawn from position 40°44'58"N, 073°57'41"W (47th Street, New York, NY to N Basin Rd, Long Island City, NY) between the east shore of Manhattan and west shore of Roosevelt Island. Commercial passenger vessels must pass as close to the pier head line as possible and must transit through the zone **no later than 7:30 p.m.** Vessels must operate at the minimum speed necessary to maintain safe course while crossing through the Alpha Section and take all direction that may be provided by the Coast Guard.
- 2. BRAVO Section (Northernmost viewing area):** This section is designated as a spectator area limited to vessels less than or equal to 20 meters in length (65.6 feet). All navigable waters of the East River south of a line drawn from position 40°45'20"N, 073°57'21"W (57th Street, New York, to 43rd Ave, Long Island City, New York) to a line drawn from position 40°44'58"N, 073°57'41"W, (47th Street, New York, NY to N Basin Rd, Long Island City, NY) between the east shore of Roosevelt Island and west shore of Long Island City.

- 3. INTERIOR DIVISION/CHARLIE Section (Barge Display area):** No vessel movements are authorized in this section after **6:00 pm** without permission from the U.S. Coast Guard. This section is intended to accommodate fireworks display barges and accompanying tugs only. All navigable waters of the East River bound by a line drawn from position 40°44'58"N, 073°57'41"W (47th Street, New York, NY to N Basin Rd, Long Island City, NY), south along the East River to position 40°43'40"N, 073°57'59"W (15th Street, New York, NY to Noble Street, Brooklyn, NY) (See chartlet below). Commercial passenger vessels that need to transit through the Charlie Section en route to their designated viewing areas must receive authorization from the Coast Guard Patrol Commander via VHF Ch 13. Commercial passenger vessels must pass as close to the pier head line as possible and must transit through the zone **no later than 7:30 p.m.** Vessels must operate at the minimum speed necessary to maintain safe course while crossing through the Charlie Section and take all direction that may be provided by the Coast Guard.
- 4. DELTA Section (Viewing area):** This section is designated as a spectator area limited to vessels greater than or equal to **20 meters** in length (**65.6 feet**). This zone is adjacent to the Interior Division/Charlie Section (See chartlet below). All vessels **over 65 feet** in length may view the fireworks on all waters of this designated area. This zone is defined by a line drawn from position 40°43'40"N, 073°57'59"W (15th Street, New York, NY to Noble Street, Brooklyn, NY), south to a line drawn from position 40°43'19"N, 073°58'04"W (7th Street, New York, NY to Bushwick Inlet Park)
- 5. ECHO Section (Western viewing area):** This section is designated as a spectator area limited to vessels less than or equal to **20 meters** in length (**65.6 feet**) This zone is adjacent to the Interior/Division Foxtrot Section. All vessels **less than 65 feet** in length may view the fireworks on all waters of this designated area. This zone is defined by a line drawn from position 40°43'19"N, 073°58'04"W (7th Street, New York, NY to Bushwick Inlet Park), south to position 40°42'52"N, 073°58'18"W (East River Park, New York, NY to S 4th Street)
- 6. INTERIOR DIVISION/FOXTROT Section (Barge Display area):** No vessel movements are authorized in this section after **6:00 pm** without permission from the U.S. Coast Guard. This section is intended to accommodate fireworks display barges and accompanying tugs only. All navigable waters of the East River by a line drawn from position 40°42'52"N, 073°58'18"W (East River Park, New York, NY to S 4th Street), south to position 40°41'58"N, 074°00'16"W (Downtown Manhattan Heliport to Pier 3 Brooklyn, NY. (See chartlet below). Commercial passenger vessels that need to transit through the Foxtrot Section en route to their designated viewing areas must receive authorization from the Coast Guard Patrol Commander via VHF Ch 13. Commercial passenger vessels must pass as close to the pier head line as possible and must transit through the zone **no later than 7:30 p.m.** Vessels must operate at the minimum speed necessary to maintain safe course while crossing through the Foxtrot Section and take all direction that may be provided by the Coast Guard.

- 7. GOLF (Southernmost viewing area):** This section is designated as a spectator area in which access is open to all vessels all lengths. This zone is adjacent to the Interior Division/Foxtrot Section (See chartlet below). All vessels in all length may view the fireworks on all waters of this designated area. This zone is defined by a line drawn from position 40°41'58"N, 074°00'16"W to a line drawn from position 40°41'29"N, 074°00'31"W (Governors Island Ventilator to Pier 7 Brooklyn, NY), south. West by a line drawn from position 40°41'47"N, 074°00'37"W (Downtown Manhattan Heliport to Governors Island Ventilator).

Tugs & tows and commercial vessels not observing the fireworks must be outside of the regulated area no later than **6:00pm**.

Additional details regarding this event are available on the Macy's Marine Hot Line at **(212) 494-5243** or the Macy's Annual Events Hot Line at **(212) 494-4495**.

For additional information about the regulated area restrictions please contact MST1 Daniel Vazquez at (718) 354-4154 or via email at Daniel.Vazquez@uscg.mil if within 48 hours prior to the event please route your calls to the Sector New York Command Center at (718) 354-4353.

Viewing Areas

Alpha: West Roosevelt Isl. South of Queensboro Bridge, south of line drawn from 57th St. Manhattan to 43rd Ave., LIC.

Vessels > 20 meters (65.6 ft) in length must be inside the safety zone by 7:30 pm, in position by 8:30 pm, & not depart until released by the CG Patrol Commander.

UN Security Zone:
Keep back 150 Yards
at ALL times.

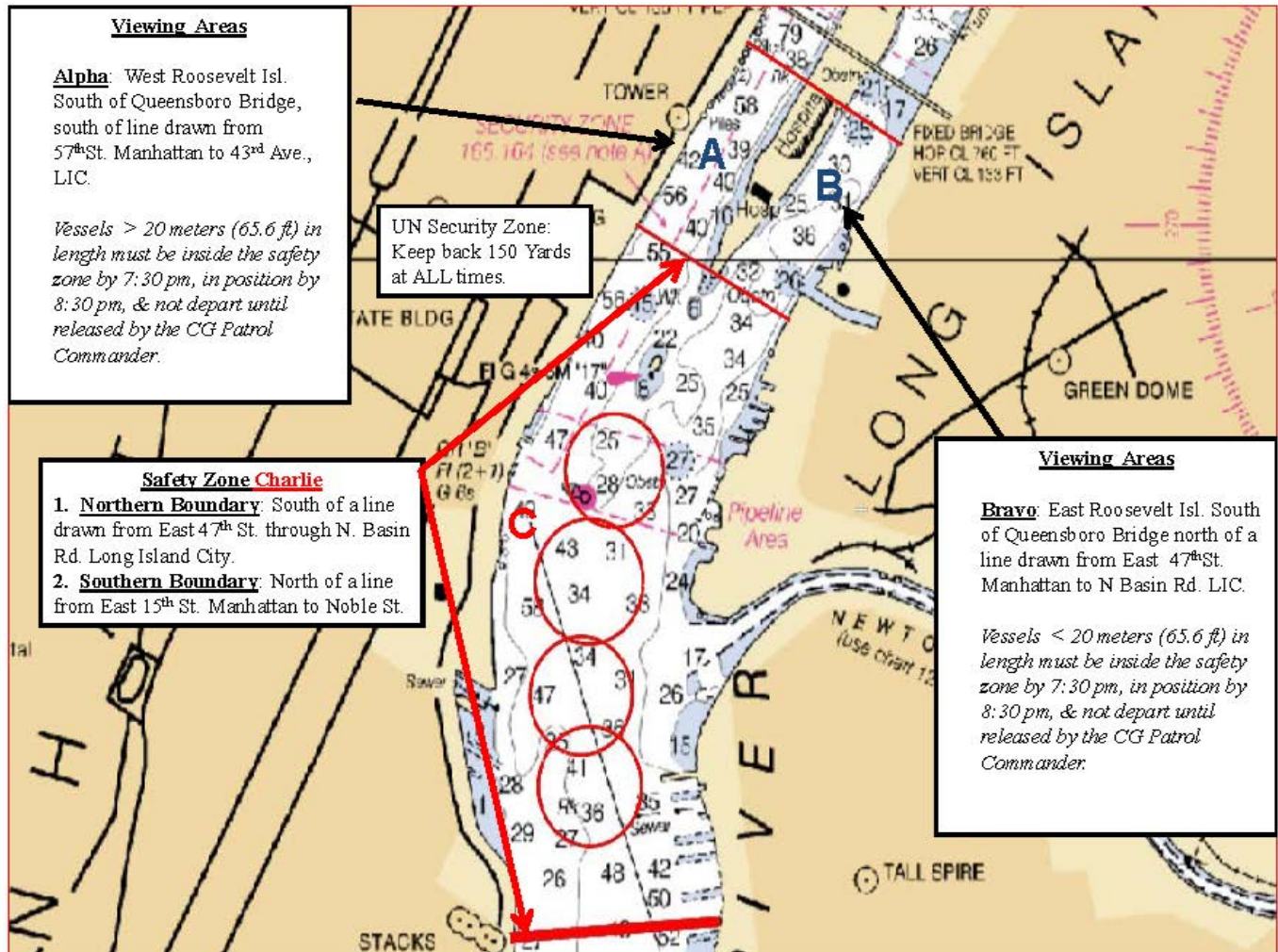
Safety Zone Charlie

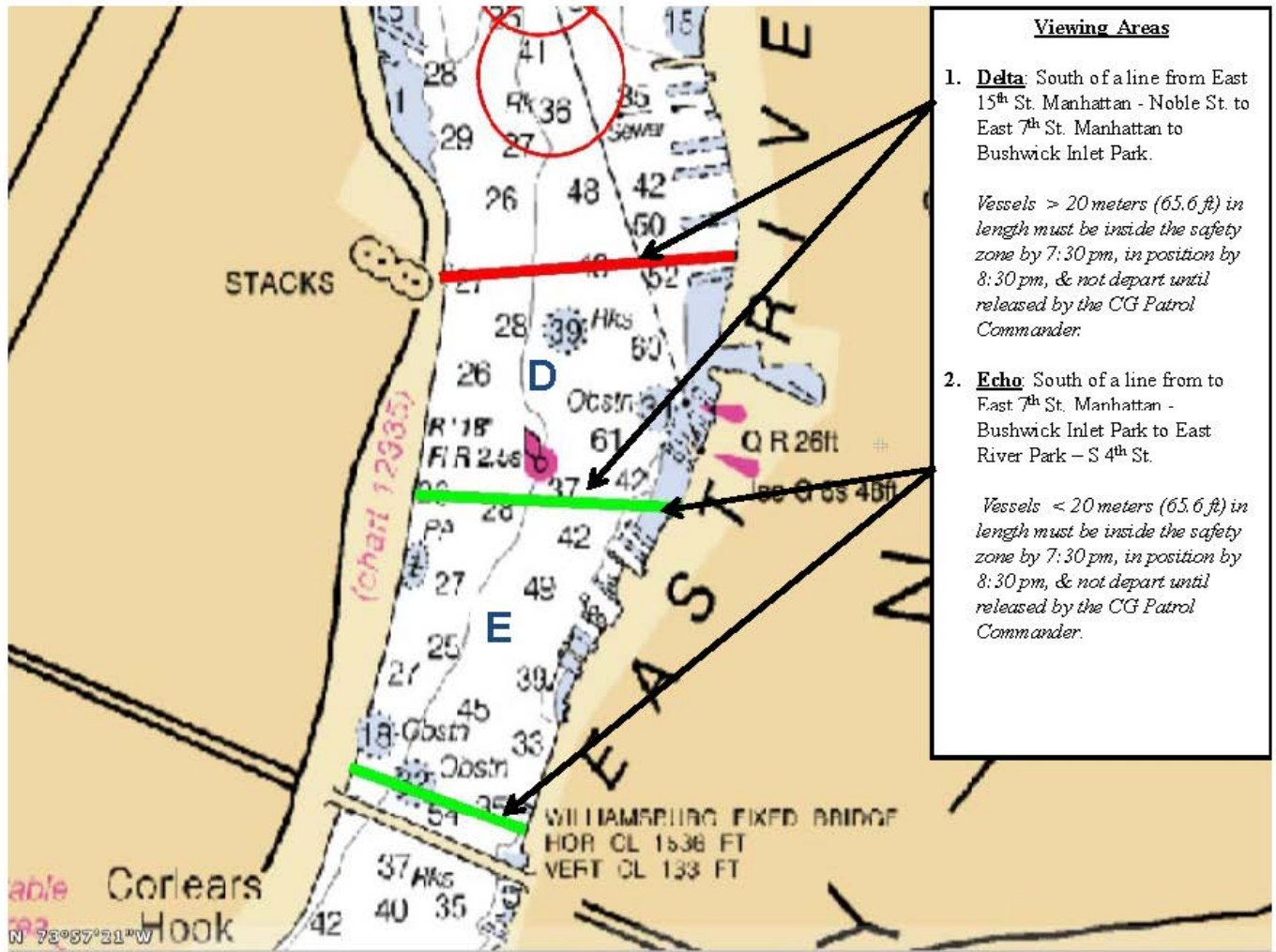
1. **Northern Boundary:** South of a line drawn from East 47th St. through N. Basin Rd. Long Island City.
2. **Southern Boundary:** North of a line from East 15th St. Manhattan to Noble St.

Viewing Areas

Bravo: East Roosevelt Isl. South of Queensboro Bridge north of a line drawn from East 47th St. Manhattan to N Basin Rd. LIC.

Vessels < 20 meters (65.6 ft) in length must be inside the safety zone by 7:30 pm, in position by 8:30 pm, & not depart until released by the CG Patrol Commander.





Viewing Areas

1. **Delta:** South of a line from East 15th St. Manhattan - Noble St. to East 7th St. Manhattan to Bushwick Inlet Park.

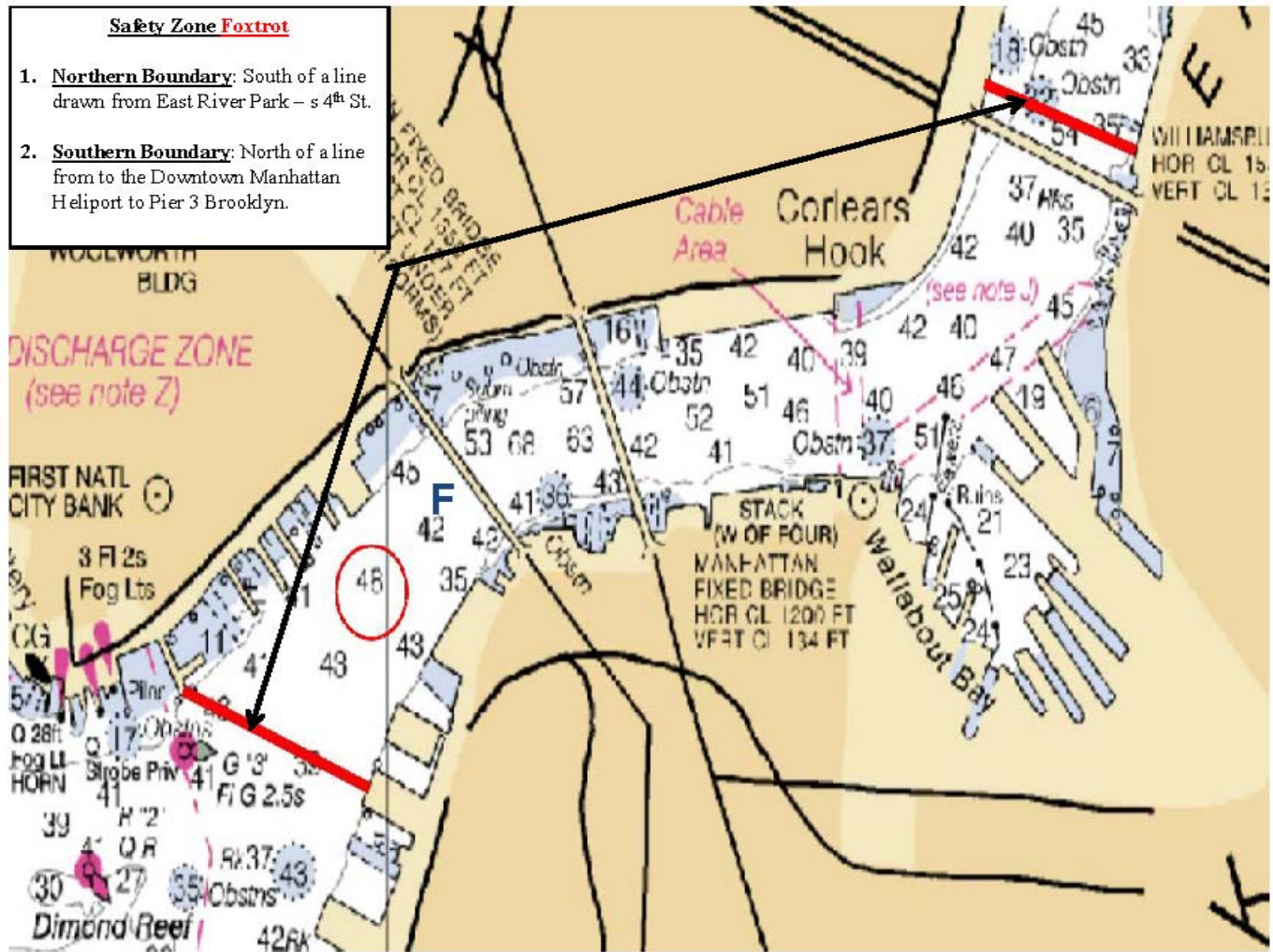
Vessels > 20 meters (65.6 ft) in length must be inside the safety zone by 7:30 pm, in position by 8:30 pm, & not depart until released by the CG Patrol Commander.

2. **Echo:** South of a line from to East 7th St. Manhattan - Bushwick Inlet Park to East River Park - S 4th St.

Vessels < 20 meters (65.6 ft) in length must be inside the safety zone by 7:30 pm, in position by 8:30 pm, & not depart until released by the CG Patrol Commander.

Safety Zone Foxtrot

1. **Northern Boundary:** South of a line drawn from East River Park – s 4th St.
2. **Southern Boundary:** North of a line from the Downtown Manhattan Heliport to Pier 3 Brooklyn.



Viewing Areas

1. **Golf** South of a line from to the Governors Island vent to Pier 7 Brooklyn.

All Vessel lengths, must be inside the safety zone by 7:30 pm, in position by 8:30 pm, & not depart until released by the CG Patrol Commander.

